



# GT 1™ TIMER

## OPERATIONS MANUAL



**MASTERLUBE SYSTEMS LTD**  
**Unit 15, Dabble Duck Ind. Est.**  
**Shildon, Co. Durham**  
**DL4 2QN**

Tel +44 (0) 1388 772276 Fax +44 (0) 1388 778893

[www.bignall.co.uk](http://www.bignall.co.uk)

## CONTENTS

CONTENTS.....	2
GT 1 TIMER SPECIFICATION .....	3
DESCRIPTION .....	3
SETTINGS.....	3
INITIAL SETTINGS.....	3
ADJUSTMENTS .....	4
SETTINGS.....	4
WARNING LIGHT .....	5
MAINTENANCE .....	5
Warranty .....	6

## GT 1 TIMER SPECIFICATION

<b>OFF TIME</b>	<b>3 secs &gt; 2.5 hrs</b>
<b>MONITORED ON TIME</b>	<b>3 secs &gt; 2.5 hrs</b>
<b>OUTPUT</b>	<b>Fused 16 amp +ve</b>
<b>SUPPLY VOLTAGE</b>	<b>13.8v &gt; 28v</b>
<b>LED DISPLAYS</b>	<b>Green – Pump On Amber – Power On Red Flash – Overload</b>

### DESCRIPTION

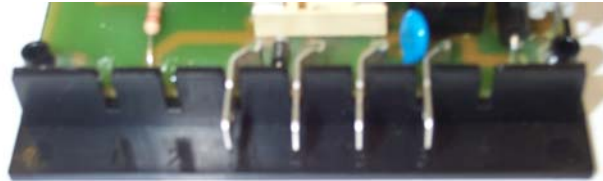
The **GT1™** is a combined cycle timer and system monitor device.

Adjustment to the frequency of operation cycles is achieved by adjustment to the 'off' cycle. In order to increase the amount of lubricant, cycles can be made to occur more frequently by reducing the 'off' time. This is done by adjustment of four time windows, which are built into the timer. The ones most suitable for your equipment will be pre-selected for you on installation.

### SETTINGS

Terminals are numbered left to right and connections are as follows

- 1.
- 2.
3. Pump Positive (+)
4. Pump Negative (-)
5. Supply Positive (+)
6. Supply Negative (-)
- 7.



1   2   3   4   5   6   7

### INITIAL SETTINGS

To set timer during installation;

At the point of the 'on' period the RED Overload LED will blink this is to test the internal circuitry and is not a fault. The RED Overload LED will remain on constantly to indicate a fault.

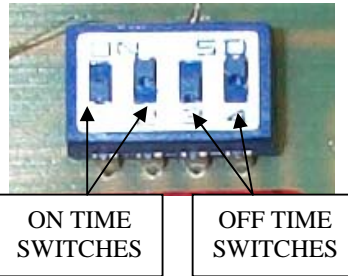
Set the 'off' time with the internal RHS pair of switches and the external trimmer;

**HARE;** Shorter 'off' time (more grease)  
**TORTOISE;** Longer 'off' time (less grease)

## ADJUSTMENTS

The 'on' cycle is controlled by an internal trimmer. Four windows of adjustment are provided, these are selected by altering two LHS switches

The 'off' cycle is controlled by an external trimmer. Four windows of adjustment are provided, these are selected by altering the two RHS switches

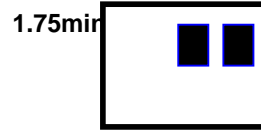
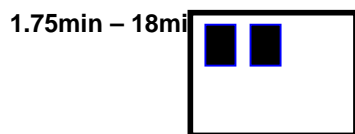
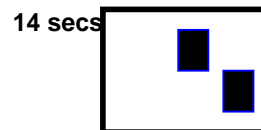
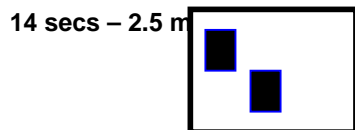
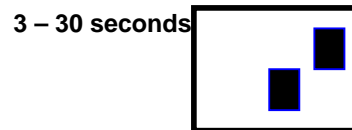
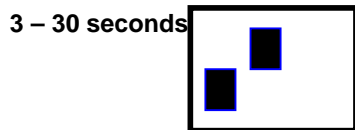


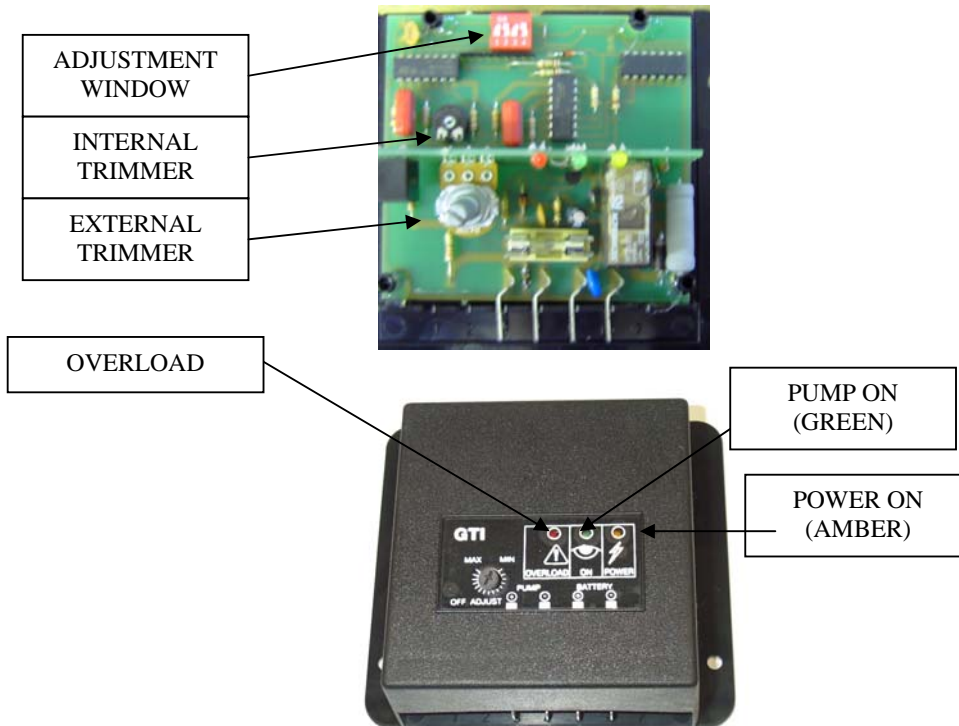
**THE ABOVE SETTINGS ARE PRESET ON INSTALLATION TO THE MACHINES  
GREASING NEEDS, ANY ALTERATION TO PRESET INTERNAL SETTINGS SHOULD  
ONLY BE DONE WITH GUIDANCE FROM BIGNALL LUBRITEC**

## SETTINGS

### MONITORING PERIOD

### OFF PERIOD





## WARNING LIGHT

The timer operates through a relay. The points are protected by a 10amp fuse. If the timer is overloaded and the fuse blows, the ON cycle will show a red light as well as a green light. A new fuse should be fitted. A slight flicker of the red light maybe present at the beginning of the ON cycle. This is part of the process of checking the fuse and maybe ignored.

## MAINTENANCE

There are no serviceable parts within the GT1 Timer <sup>TM</sup>. If the timer is at fault, then the Timer itself must be replaced. The following steps will help determine whether it is the Timer that is at fault.

First check the feed to the Timer with a voltmeter. When the power is on, the amber light should show and the full equipment voltage should be present.

**WARNING; DISCONNECTION AND RECONNECTION OF ANY TERMINALS FROM THE TIMER SHOULD ONLY BE CARRIED OUT WITH THE IGNITION IN THE OFF POSITION.**

Wait for the next cycle (indicated by the green light). If the equipment does not operate, check the voltage at terminal 4 while the light is on. If the voltage is zero and the light is on, check the fuse in the timer housing. Replace the Timer if the voltage is zero whilst the green light is on and the fuse is in good condition.

If the green light does not come on after the preset delay period check the settings. First reset the times to minimum (NB record their original settings). This is done by setting the switches, and by setting both internal and external trimmers fully anti clockwise. The timer should now operate with the green light on for approximately 3 seconds and then off for the same period. By reference to setting procedure the correct adjustments should now be made. If the expected cycle timer cannot be calibrated or are unreliable the unit must be replaced.



## Warranty

MASTERLUBE SYSTEMS LTD. (The Company) guarantees its products to conform to their specifications and to be free from defects therein due to faulty workmanship or materials for a period of twelve (12) months from the date of delivery to the purchaser or from the documented date of installation which shall in no event be more than six (6) calendar months from the date of delivery.

**There are no other warranties express or implied including but not limited to the warranties of merchantability and fitness for the particular purpose.**

Some states do not permit the limitations of warranties.

The Company shall not be liable for any damages resulting in whole or in part, directly or indirectly, as a result of any misuse, accident, negligence, or improper installation or adjustment.

The Company shall not be bound by or be liable for any affirmation of fact, promise, representation or inducement made by any agent, distributor, or reseller which is not embodied in this agreement.

**In no event shall the company be liable for damages, regardless of the form of action, or nature of the claim, exceeding the costs of the products. In no event shall the company be liable for loss of profit, indirect, incidental, special, consequential or other similar damages arising out of the use of the products, even if the company has been advised of special circumstances of the customer or the possibility of such damages.**

In any event the customer's sole and exclusive remedy shall be the repair or replacement of the product.

**MASTERLUBE SYSTEMS LTD.  
UNIT 15, DABBLE BUCK IND. EST.  
SHILDON  
CO. DURHAM  
DL4 2QN  
UK  
TEL:+44(0)1388 775584  
FAX:+44(0)1388778893  
WEB: [www.bignall.co.uk](http://www.bignall.co.uk)**